

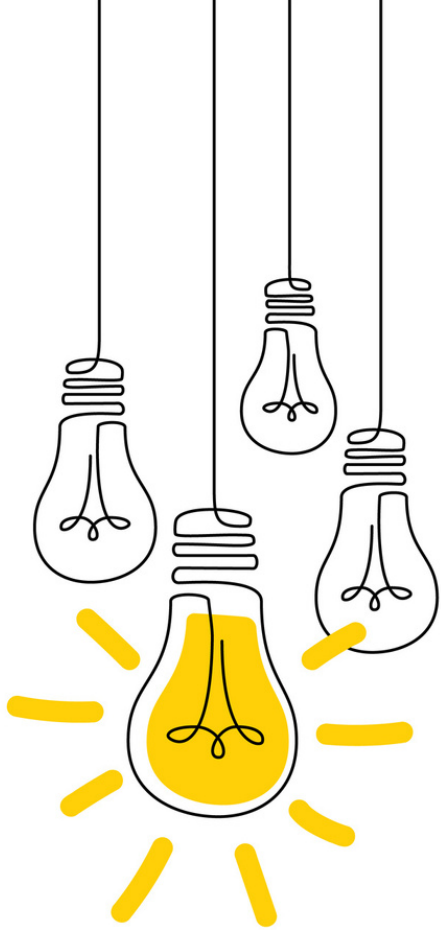
Robin Katrick

Planet Youth

PLANET
Youth[®]

Coalition and Capacity Building Planet Youth Guidance Program

Robin Katrick, Regional Director of North America, Planet Youth



What is a coalition?

A group of community partners and champions brought together by common interests and working together to achieve common goals.

How do coalitions form?

Coalitions often come together when community issues are too large to tackle alone. When created thoughtfully and managed effectively, coalitions can be very effective in solving problems and achieving goals.

Local Coalitions



An important part of the IPM and Planet Youth process



Requires a continuous effort to build strong, collaborative, and multi-sector teams




Brought together by a shared vision



Willingness to commit to long-term primary prevention work

Local Coalition Benefits

- 
- A background image showing several hands of different skin tones cupping a bright pink heart. The hands are positioned in a way that suggests care and support.
- ✓ Avoid duplication of efforts.
 - ✓ Build excitement among community members and partners who may have felt burnt out working on this alone.
 - ✓ Empower the community and local partners to take action together.
 - ✓ Increase communication among a wide-variety of community partners and sectors.
 - ✓ Combine resources to have a greater impact.

Strong local teams help support local Planet Youth implementation throughout the entire process to build healthier environments for youth and adolescents.



The 10 core steps of the Icelandic Prevention Model (IPM)



Capacity Building in the IPM



Step 1
Local coalition
identification,
development,
and capacity
building



Step 2
Funding
identification,
development,
and capacity
building



Step 3
Pre-data
collection
planning and
community
engagement



Step 4
Data collection
and processing,
including data
driven
diagnostics



Step 5
Enhancing
community
participation and
engagement



Step 6
Dissemination of
findings



Step 7
Community goal
setting and other
organized
responses to the
findings



Step 8
Policy and
practice
alignment



Step 9
Adolescent
immersion in
primary
prevention
environments
activities, and
messaging



Step 10
Reflect on the work
that has been
completed and
build upon it by
repeating the steps
again in a new
cycle



The Importance of Local Coalitions

Implementing Planet Youth requires a local coalition that is taking primary responsibility for this work.

- ✔ Supports implementation through each of the 10 steps.
- ✔ Ensures workload is distributed among many local community partners.
- ✔ Has the local knowledge about the community which supports sustainability and long-term impact.



A local coalition is not...



A local coalition is not brought together by an upper coordinating team and following only guidelines from that coordinating team.



A local coalition is not an exclusive team. An effort should be made to make sure all members that need and should be at the table are included.



The Coalition Lead Role

The local coalition lead role is central to moving Planet Youth forward locally.

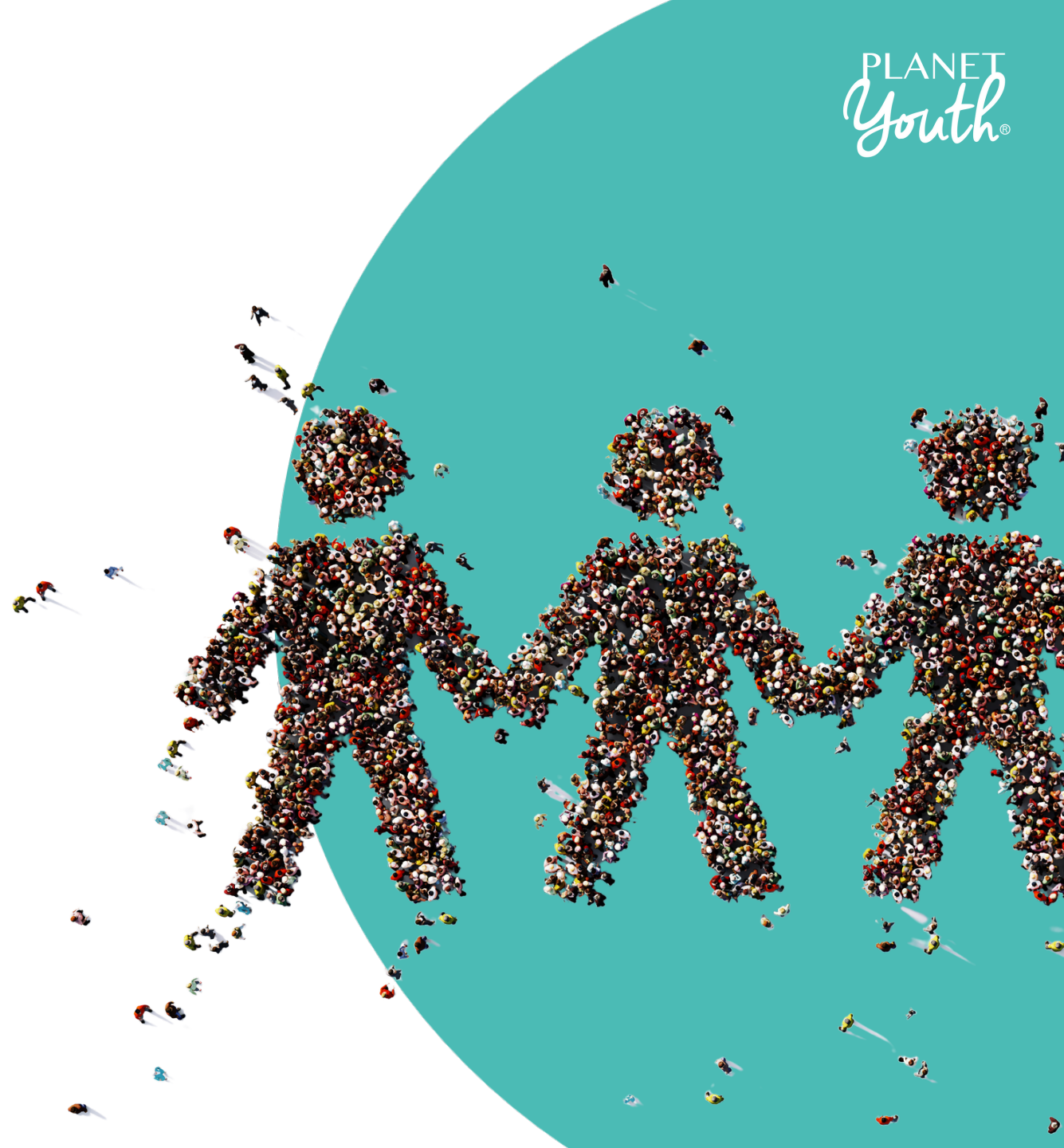
It is important that the lead role has paid protected time to dedicate to the work.

It's also important that the local lead role have excellent facilitation skills, is connected to the community, and can pull together various community partners.



Coalition Member Role

Coalition members regularly attend and actively participate in coalition meetings. The coalition team members support the coalition lead by taking on action items and tasks to support the local implementation of Planet Youth.



Community Champions

Community champions may or may not be on the local coalition, however have an important role in the community. They are people or organizations the community listens to and they often can spark engagement and interest in the work.





Community Approach

A collaborative community-based approach with involvement from a wide variety of community sectors is essential in having a long term impact.



The community knows their resources and capacity best. They often know the avenues that are needed to reach intended outcomes. Let the community lead the way.

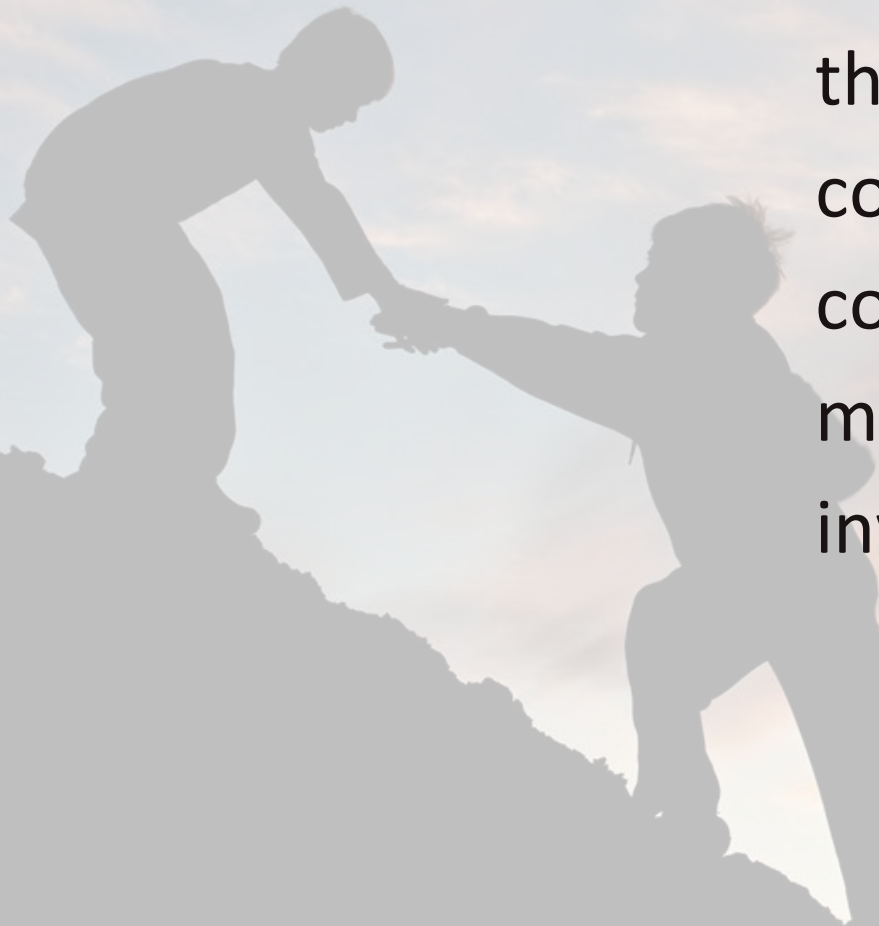


The coalition serves to inform, motivate, and initiate community work.



Build Trust

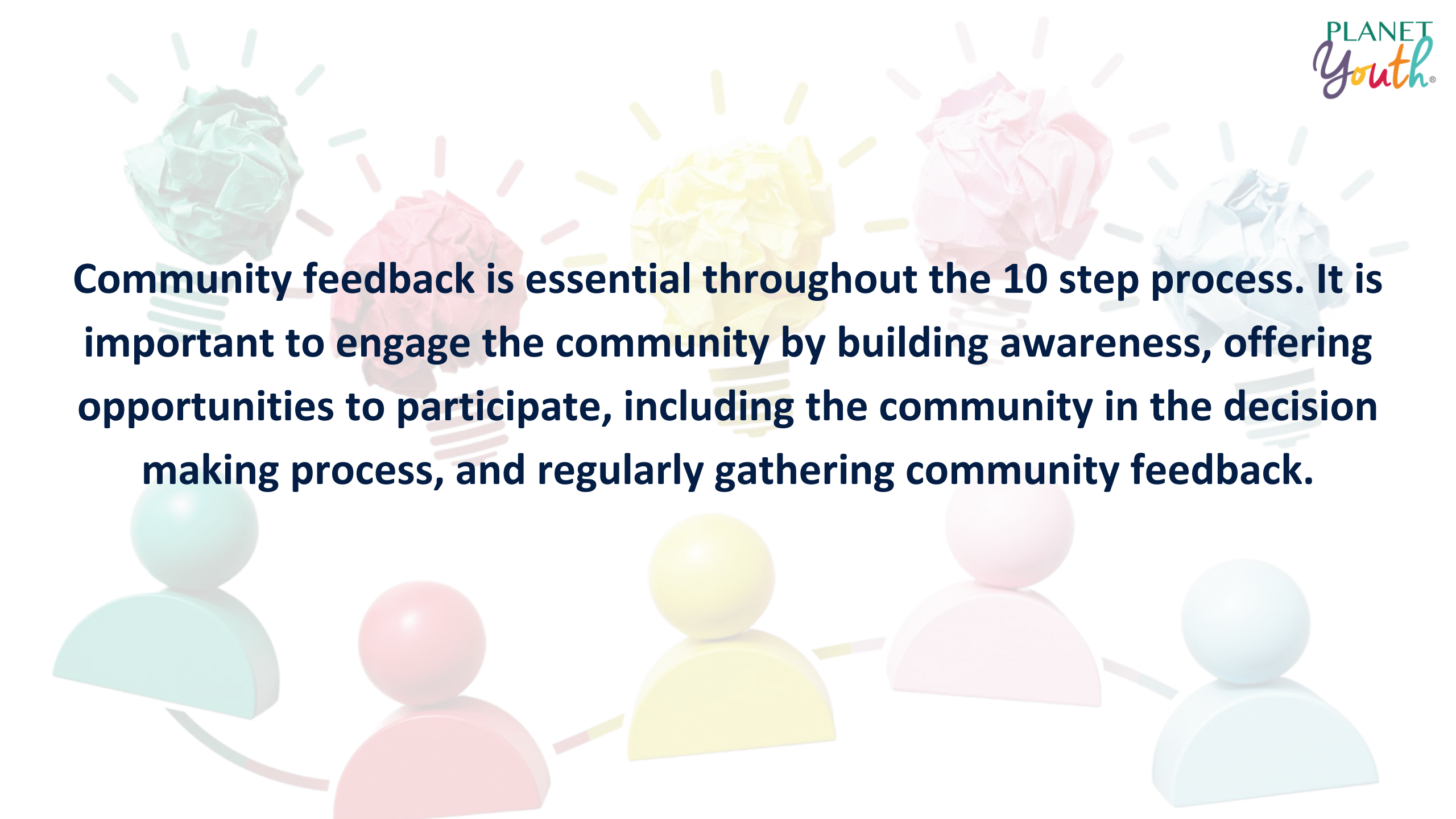
Make sure promises are followed through with action. This shows the community and the partners your commitment to the work and this will make it more likely for people to get involved and stay involved.



Community Engagement

It is important to not make decisions for an entire community without receiving community feedback.



The background features a row of five glowing lightbulbs made of crumpled paper in teal, pink, yellow, light pink, and light blue. Below them is a row of five stylized human figures in the same color sequence, connected by thin lines, representing a community or network.

Community feedback is essential throughout the 10 step process. It is important to engage the community by building awareness, offering opportunities to participate, including the community in the decision making process, and regularly gathering community feedback.

Community Feedback Opportunities

Coalition Building

Preparation for Data Collection and Community
Engagement

Before and During Dissemination

Action Planning

Reflection Before Repeating the Steps



Community Participation

Offer different ways for community members, champions, and partners to participate in this process to accommodate varying levels of commitment. There are a wide variety of ways for coalition and community members to engage in the work and take on tasks.

 **High Commitment**

 **Medium Commitment**

 **Low Commitment**

Planet Youth Tools and Support

Communities are not alone when taking on this work. While they lead the way through the steps, Planet Youth is right there with them to help communities build a strong foundation for sustainable long-term change.

Project Management

Community Implementation Guide

Templates

Academy Workshops

Q&A Sessions with PY

Process Evaluation



The process is progress.





You know your community best!

Thank you!



THE ANNUAL PLANET YOUTH CONFERENCE 2025

Welcome to Reykjavík!
17th-19th March



PLANET
Youth®



Scan the QR Code to learn more